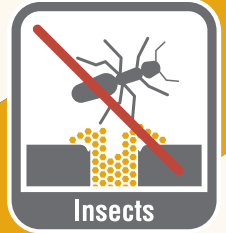


RG+ is an advancement over our RG Sand with its improved strengths, wider joint capability, etc.

And it has another difference...

THE WETTING PROCEDURE

RG+



Techniseal[®]
25 years of excellence and innovation

techniseal.com | 1 800 465-7325

RG+ TECHNOLOGY

A “TECHNICAL EVOLUTION”

Some applicators may still be using the RG method of wetting the sand. Please read below the recommended wetting procedure for RG+. And



please go to our website, techniseal.com, to see the video of the RG+ installation procedure.

RG+ WETTING PROCEDURE

Before wetting: Sweep the surface with a fine bristle brush and remove all residue with a **leaf blower**. Blowing in all directions is recommended to remove all residue.

Wetting should take place in **200 sq. ft. sections**. Ensure that the wetting of one 200 sq. ft. section is finished before another section is started.

RG+ starts setting in only a **few minutes**. Therefore, wetting of each 200 sq. ft. section should be done **without interruption**.

Avoid flooding the surface and causing run-off. Foaming and run-off on the surface are caused by excessive watering; adjust spraying accordingly.

1. Define a 200 sq. ft. section
2. Set the spray nozzle to “shower”
3. Start showering from the bottom of the slope and work up the slope
4. Wet the section for **30 seconds** without displacing the sand
5. Return immediately and wet the same section again for 30 more seconds to wet the joints completely
6. In very hot conditions (+ 85°F), wet a third time for **30 seconds**
7. Move on to an adjacent 200 sq. ft. section immediately
8. For highly porous pavers (tumbled or weathered), as soon as wetting is completed on a section, use a leaf blower to quickly blow the excess water off the surface. This will remove any remaining sand and polymer residue.

If the above procedure is **NOT** followed, a light haze may be left on the surface. This can be easily removed, but is not typically factored into the cost. So, to avoid this unnecessary and costly secondary step, please follow the above instructions precisely.